

# sculpture

May 2016  
Vol. 35 No. 4

A publication of the  
International Sculpture Center  
[www.sculpture.org](http://www.sculpture.org)



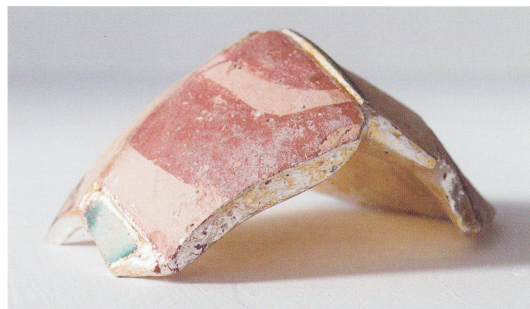
Below left: Ugo Rondinone, *mute*.  
Left: Sharon Louden, *Windows*. Above:  
Neil Beloufa, (center) *World Domination*. Right: Shinji Turner-Yamamoto,  
*Pentimenti: Mojácar la Vieja*.

lations and environments, which distort everyday images and occurrences into the strange and wonderful. The new and recent works featured in "Vocabulary of Solitude," including a large-scale color spectrum installation that unfolds various facets of existence, find continuously inventive ways to condense and draw out the details of lived experience. At the center of everything and in the middle of nothing, 45 life-size clown sculptures go through the motions of an ordinary 24-hour day. Titled in the present tense — *wake, be, breathe, remember, run, daydream, feel, yawn, sleep*—these personifications of unhappiness balance the euphoria of momentary beauty found in Rondinone's rainbows and mandalas with the despondency of rote repetition. Web site <[www.boijmans.nl](http://www.boijmans.nl)>

## Museum of Modern Art New York

Neil Beloufa  
*Through June 12, 2016*

Seamlessly blending moving image and sculpture, Beloufa lures viewers into a no-man's land on the border between fiction and reality. Within these environments, projections become objects, obstructing and consciously framing the viewing experience. Visible cables and cords, in addition to live, closed-circuit television feeds of the space, muddy the waters further, confusing the artistic, the technological, and the social. Then there are the projections them-



selves, created in collaboration with amateur and professional actors, who improvise on a panoply of enigmatic subjects, ranging from extraterrestrials to nationalism, terrorism, consumerism, and the iconography of the red bandana. Beloufa's new environment, *The Colonies* (2016), was made by hand, using inexpensive construction materials and techniques. The repurposed video at its center, *People's passion, lifestyle, beautiful wine, gigantic glass towers, all surrounded by water* (2011), features a group of people in an unnamed city enthusiastically describing their lives in the stilted non-speak of infomercials; they could be anywhere, but Midtown Manhattan suits them perfectly. Web site <[www.moma.org](http://www.moma.org)>

## Tweed Museum of Art, University of Minnesota Duluth, Minnesota

Sharon Louden  
*Through May 26, 2016*

Louden, who has been called "the Robert Ryman of the 21st century," gives linear abstraction an anthropomorphic edge. Though predominantly formal and minimal, her animations, sculptures, and installations, with their implied or actual movement, suggest a human aspect in their gestural individuality. Her new multidisciplinary installation, *Windows*, extends the play of line into a symphony of planes. Suspended from the ceiling, clear acetate drawings,

bright, thin, reflective sheets of aluminum, and colored aluminum panels fill the space, their dynamic, postmodern hall-of-mirrors effect activated by shape-shifting theatrical lighting (Arden Weaver) and a specially composed musical score (Andrew E. Simpson). Web site <[www.d.umn.edu/tma](http://www.d.umn.edu/tma)>

## Weston Art Gallery Cincinnati

Shinji Turner-Yamamoto  
*Through June 5, 2016*

For the environmentally conscious Turner-Yamamoto, earth is both subject and material. But his work goes deeper than respect for the planet; at its core, it is concerned with the roots of that respect—call it awareness, mindfulness, or simply attention to what we can see, hear, smell, and feel around us. His new multi-level, multimedia installation *Side-real Silence* (relating to distant stars or constellations) re-creates the aural phenomena of cascading waterfalls in the Pacific Northwest and Switzerland. Reimagining his research trips to those regions, Turner-Yamamoto transforms the gallery into a continuously unfolding soundscape traversed by a walking path that cuts through a landscape composed of paintings, sculptures, photographs, and videos. In this perceptual paradise, earth meets the heavens as crystalline formations and fossil remains echo cosmic time and space. Web site <[www.westonartgallery.com](http://www.westonartgallery.com)>

itinerary

BELOUFA: RITA TAYLOR; COURTESY OF THE ARTIST / TURNER-YAMAMOTO: COURTESY THE ARTIST