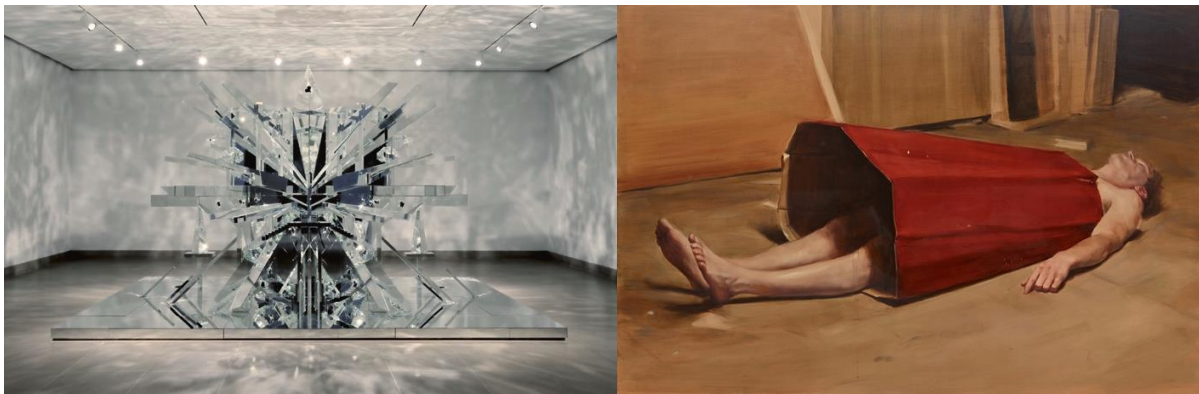


**THE WAREHOUSE DALLAS IN PARTNERSHIP WITH THE DALLAS MUSEUM OF ART ANNOUNCE FALL 2024 EXHIBITIONS**

DALLAS, Texas (September 11, 2024)— The Warehouse, Dallas, the contemporary art space founded by noted collectors and philanthropists Cindy and Howard Rachofsky, in collaboration with the Dallas Museum of Art announce two new exhibitions comprising its fall 2024 program.

In conjunction with its fall exhibitions, The Warehouse will continue its weekly public hours every Saturday from 12:00PM to 5:00PM. Admission to The Warehouse is free.

**ABOUT THE EXHIBITION*****A Product of Time: 25 Years of TWO x TWO for AIDS and Art***

**September 7-November 30, 2024 | Curated By: Anna Katherine Brodbeck, Vivian Li & Ade Omotosho**

Curated by the Dallas Museum of Art's Hoffman Family Senior Curator of Contemporary Art, Anna Katherine Brodbeck; The Lupe Murchison Curator of Contemporary Art, Vivian Li; and The Nancy and Tim Hanley Assistant Curator of Contemporary Art, Ade Omotosho, *A Product of Time* celebrates the transformative effect of TWO x TWO for AIDS and Art—the annual contemporary art auction held at The Rachofsky House benefiting the Dallas Museum of Art and amfAR, The Foundation for AIDS Research. Since the event's inception, the Museum has acquired over 350 major works of art and organized dozens of shows with the funds raised from this benefit auction. TWO x TWO, with galvanizing support from the local community, has put Dallas on the map as a global destination for contemporary art. This October marks the 25th and final edition of the landmark event. Sections of the exhibition are organized thematically to demonstrate how these funds have allowed the Museum to acquire art that speaks to the most pressing issues of our time.

Furthermore, each section highlights the work of a TWO x TWO artist who has had a solo exhibition at the DMA, demonstrating the robust program TWO x TWO has helped build at the Museum, allowing it to fulfill its mission to be a force for innovation in contemporary art. Artists who have had solo or two-person exhibitions at the Museum include Michaël Borremans, Frank Bowling OBE RA, Sandra Cinto, Olafur Eliasson, Isa Genzken, Jim Hodges, On Kawara, Jim Lambie, Sadamasa Motonaga, Laura Owens, Sigmar Polke, Thomas Struth, Luc Tuymans and Jonas Wood.

***Nicolas Party: Ewe in the Field*****September 7–November 30, 2024**

*Nicolas Party: Ewe in the Field* features work by Nicolas Party, the 2024 TWO x TWO honored artist. Curated by the artist, these galleries include pieces from the Dallas Museum of Art's collection alongside a number of loans, and they are evidence of the formal and emotive depth of Party's explorations of landscape. The artist has included a 19th-century work from the Museum's collection—Rosa Bonheur's *Ewe in the Field*—as a historical touchstone and point of inspiration for his work. This presentation marks a return to Dallas for Party, as his first solo U.S. museum presentation was the 2016 site-specific commissioned mural in the DMA's Concourse Gallery, *Nicolas Party: Pathway*.

<https://thewarehousedallas.org/exhibition/nicolasparty/>

**About The Warehouse, Dallas** Since 2012, Cindy and Howard Rachofsky have provided The Warehouse as a contemporary art space in Dallas, Texas. Its mission has been to advance scholarship in and understanding of postwar and contemporary art. The Warehouse has staged exhibitions curated by an ever-changing roster of internationally admired curators, including Gavin Delahunty, Independent Curator; Lisa Le Feuvre, Inaugural Executive Director of Holt/Smithson Foundation; Leigh Arnold, Curator, Nasher Sculpture Center; Thomas Feulmer, Curator, The Warehouse; Mika Yoshitake, Independent Curator; Rodrigo Moura, Chief Curator, El Museo del Barrio; and Allan Schwartzman, Founding Director, The Warehouse and The Rachofsky Collection. The Warehouse presents 2-3 exhibitions a year, developed specifically to suggest new perspectives on art and invite fresh questions that challenge and expand accepted narratives of history. Devoted to education, The Warehouse offers educational programs and public hours, hosts visiting artists and art professionals, and publishes scholarly books. The Warehouse exhibitions are open to the general public on Saturdays, 12–5PM, and by appointment during the week, based on staff availability. <https://thewarehousedallas.org/>

**About the Dallas Museum of Art** The Dallas Museum of Art (DMA) is an inclusive, welcoming space for everyone to see its global collection of more than 25,000 works spanning 5,000 years of history and a range of world cultures. The DMA is one of the largest art museums in the United States and is located in one of the fastest growing metropolitan areas in the country, with free general admission for all visitors. As an Open Access institution, the DMA offers digital images of all public-domain artworks in its collection for use by the public. The DMA provides educational programming for all ages, from exhibitions and lectures to concerts, literary events and dramatic performances. The Museum is open Wednesday through Sunday, 11AM–5PM. <https://dma.org>

**About TWO x TWO for AIDS and Art** TWO x TWO for AIDS and Art is an annual black-tie gala and contemporary art auction held at The Rachofsky House in Dallas, Texas, celebrating its 25th anniversary in 2024. Thanks to the phenomenal support of the participating artists, dealers, sponsors and patrons, TWO x TWO has raised over \$120 million in its 24-year history in support of amfAR's AIDS research initiatives and the Dallas Museum of Art's contemporary art acquisitions and exhibitions.

TWO x TWO for AIDS and Art has evolved into a series of social events designed to highlight the efforts of amfAR and engage the arts community in Dallas. TWO x TWO has become the largest fundraiser in the United States for amfAR. TWO x TWO is also the largest single annual source of funds for contemporary art acquisitions at the DMA, enabling the addition of over 350 major works of contemporary art to its permanent collection and helping fund remarkable contemporary exhibitions. It is the extraordinary generosity, passion and dedication at the heart of this endeavor that ensure the continued success of TWO x TWO for AIDS and Art.

<https://twotwo.org/>

To receive additional press information or images, or to request an interview, please contact:

Meghan Looney

The Warehouse, Dallas, Marketing and Public Relations Manager

+1 214.232.7783

[Meghan@thewarehousedallas.org](mailto:Meghan@thewarehousedallas.org)

### **Caption and courtesy information:**

#### **David Altmejd**

Canadian, born 1974

The Eye, 1974

Wood and mirrors

129 ½ x 216 ½ x 144 ½ inches (328.9 x 549.9 x 367 cm)

Dallas Museum of Art, TWO x TWO for AIDS and Art Fund © David Altmejd

#### **Michaël Borremans**

Belgian, born 1963

The Devil's Dress, 2011

Oil on canvas

78 ¾ x 118 ⅜ inches (200 x 300cm)

Dallas Museum of Art, TWO x TWO for AIDS and Art Fund © Michaël Borremans

#### **Nicolas Party**

Swiss, born 1980

Landscape, 2022

Soft pastel on linen

# THE WAREHOUSE



Left: 88 9/16 x 31 1/2 inches (225x80 cm); Center 88 9/16 x 63 inches (225 x 160 cm); Right: 88 9/16 x 31 1/2 inches (225 x 80cm)  
Green Family Art Foundation, Courtesy of Adam Green Art Advisory